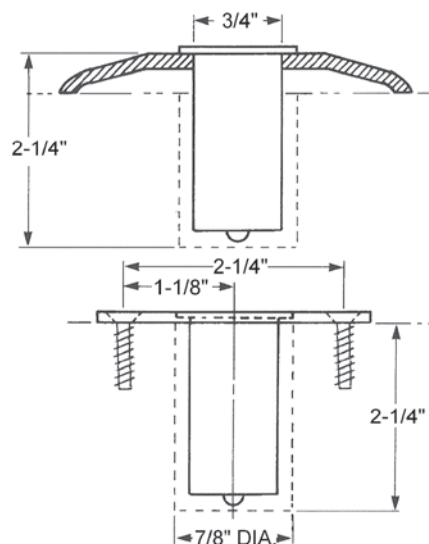


# DPS280 - Dust Proof Strike



## FEATURES:

- Spring Loaded 3/4" Plunger.
- Both Floor and Threshold Installation.
- Face Plate 3" x 1-1/2".
- Body Diameter 15/16".
- Overall Depth 2-1/4"
- Strike Screws #12 x 1-1/2"
- Plastic Anchors
- Listed for use up to 3 Hours.

## SPECIFICATIONS:

**Dust Proof Strike** – Dust Proof Strike shall be by Doormerica model number DPS280 series and made from extruded brass. All dust proof strikes shall be provided with 3/4" diameter spring loaded plunger that returns to the floor level when the flush bolt is retracted.



## CODE COMPLIANCE:

- ANSI - A156.16.
- BHMA – L14011 - L14012
- Conforms to UL10C and UBC 7-2.
- ANSI A117.1 and ADA for barrier-free accessibility.
- C-UBC - California Uniform Builders Code.
- NFPA-80- National Fire Protection Association.
- NFPA-101- National Fire Protection, Life Safety.

## 1 YEAR LIMITED WARRANTY

### STOCKED PRODUCT

Item	Finish
DPS280	US3, 10B, 26, 26D